

Breaching our fate

Our "destiny" and our course of life are closely interwoven with our very own psychogenetics, with the individual emotional and mental predispositions of each person.

Psychogenetic analysis is the deep examination of this genetic make-up. It reveals which unconscious hereditary material is responsible for the fact that our life is just the way it is in specific areas. Often this involves connections and information that are completely unknown to the person concerned, that he or she does not even suspect or even consider possible.

The psychogenetic "heritage" determines us

All areas of life, relationships, feelings, thoughts, beliefs, decisions, crises, strokes of fate are determined by our psychogenetic heritage without even being noticed or chosen by ourselves.

The differentiated and bundled Psychogenetic Core Process had been developed to uncover and "re-program" this unconsciously effective genetic make-up. It is an elementary clarification and solution work based on the precise analysis of the mental and emotional genetic make-up of the client.

During common core process work, a client's life is thoroughly sorted out within an average of four to six months. We are working with the personal psychogenetic dimension, as well as with the psychogenetic transmissions of father and mother and the overall collective of the family.

Fate – ridden systems

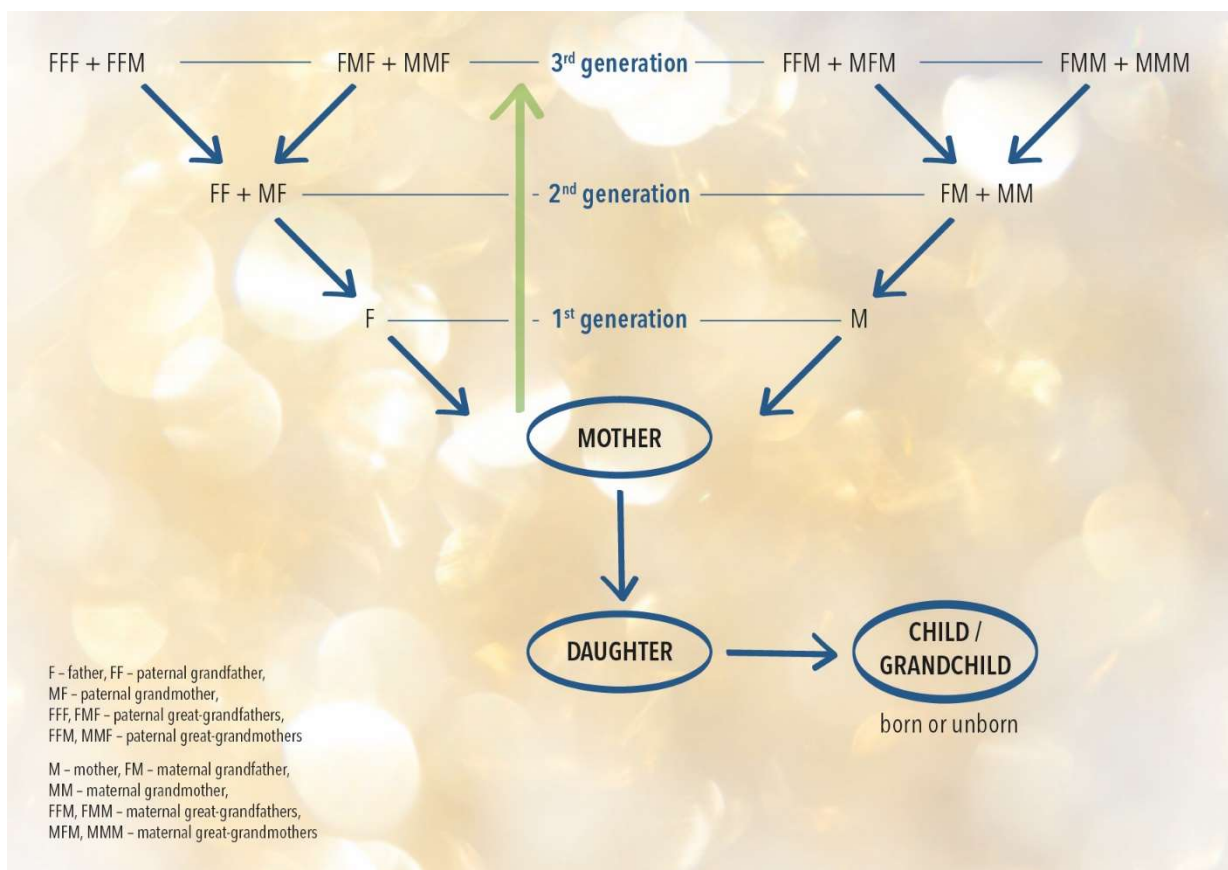
In the case of clients who come from an obviously fate-ridden system, it is necessary to work even deeper and more thoroughly to be able to relieve a fate problem to a large extent, up to and including its elimination.

Should there be a hint during the core process work about the father or mother that another generation, i.e., grandparents or great-grandparents, needs to be

considered, this is done in addition to the "normal" framework of the core process work.

In the case of families burdened with fate, in which fateful circumstances from either the paternal or maternal side appear and repeatedly affect men or women it is necessary to analyze the psychogenetic aspects tracing back to the third generation.

Based on that chart, the mother is the central person who has to take a look at her parents in the context of destiny resolution, as well as the second generation of her grandparents (both paternal and maternal) and also the third generation of great-grandparents (also paternal as well as maternal):



Based on my experience, it has been shown again and again that the emergence, the initiation, the "triggering" of the destiny themes often took place as far back as in the third generation.

If the mother then wants to eliminate her own fate constituent, she looks back to the third generation and in the progression of the process separates all the fate constituents that have accumulated in herself and up to her great-grandparents or have manifested themselves through corresponding events.

Fates are “passed” on

These events can be very varied, for example, women within a family repeatedly losing their husbands, then as now and as widows raising their children alone. Or that the men in the family repeatedly lose property or put property "at risk" and thus create fateful breakdowns and financial losses for the family - with corresponding consequences for them.

On the other hand, fates might occur on both the father's and mother's side, such as unwanted childlessness or difficulties in getting pregnant, children die (regardless of age), criminal assaults with fatal consequences take place or accidents happen again and again, running through the generations. These can either occur anew in each generation or in the generation after next.

Since the principle in the example of the graph reflects that the mother has passed on a disposition of fate to her daughter, it is in turn important for the daughter herself to analyze and eliminate the personal constellations of fate that weigh on her.

This is since the mother has brought in an external family - in the form of the daughter's father. Due to the new family constellation through the father, further "psychogenetic mixtures" and fates come add as aspects that could affect the daughter.

It also means that if for example the mother has a sister, this sister, if she also has a child, has added another external family to her life, which in turn has transferred other psychogenetic fate components to the common child through the sister's husband, i.e. the mother's brother-in-law. This in turn forms a new "psychogenetic fate mixture".

Working through the dispositions of fate

This means that if the mother is aware of her fate constituents through the thorough examination and processing of the three past generations, it is important for the daughter to complete the psychogenetic analysis back to the

second generation of the mother. This applies to both the mother's side and the father's side, i.e., including the family externally added from the mother's side.

Only in this way the daughter for herself can filter and eliminate the dimension of the constellations of fate, and among other things, a certain increase within herself.

However, the daughter also has the possibility to go a step further by looking at her already born, still young or still unborn children to see what she as a future mother would possibly pass on to the child out of her personal psychogenetic heritage. And additionally, what her partner outside the family with whom she has or would like to start a new family, has passed on or would pass on to the child.

Redeeming destiny for our own and future generations

If both mother and daughter, as well as the daughter for her born or unborn children, together with the daughter's future husband, have looked at the whole spectrum of psychogenetic inheritance, there is a high probability of having relieved, sometimes even completely eliminated, the dispositions of fate.

Therefore, in present or future generations of this lineage, destiny no longer has an unconscious resonance, but rather a clear response of healthy life direction, possibly with "normal crises" of life.

The psychogenetic process to break a family fate takes about a year. Using the example of the mother it is advisable, to break not only her own disposition of destiny, but also that of her children, here using the example of the daughter. And with the daughter, the dispositions for future generations. The disposition of fate is thus extremely relieved and there is a probability of complete elimination.

This work needs a lot of thoroughness and attention as far as my therapeutic powers are concerned and certainly a cooperation of the client(s), as is the case with the core process.

For a life without the terror, fear, or panic that fate could once again "strike" in the family, this psychogenetic process is highly valuable and reassuring. For one's own life, the lives of one's own children and the generations to come.



PSYCHOGENETIK
Sara Maria Hardenberg

I have already been able to accompany some families on this path and I am grateful that this solution for families exists and is feasible.